

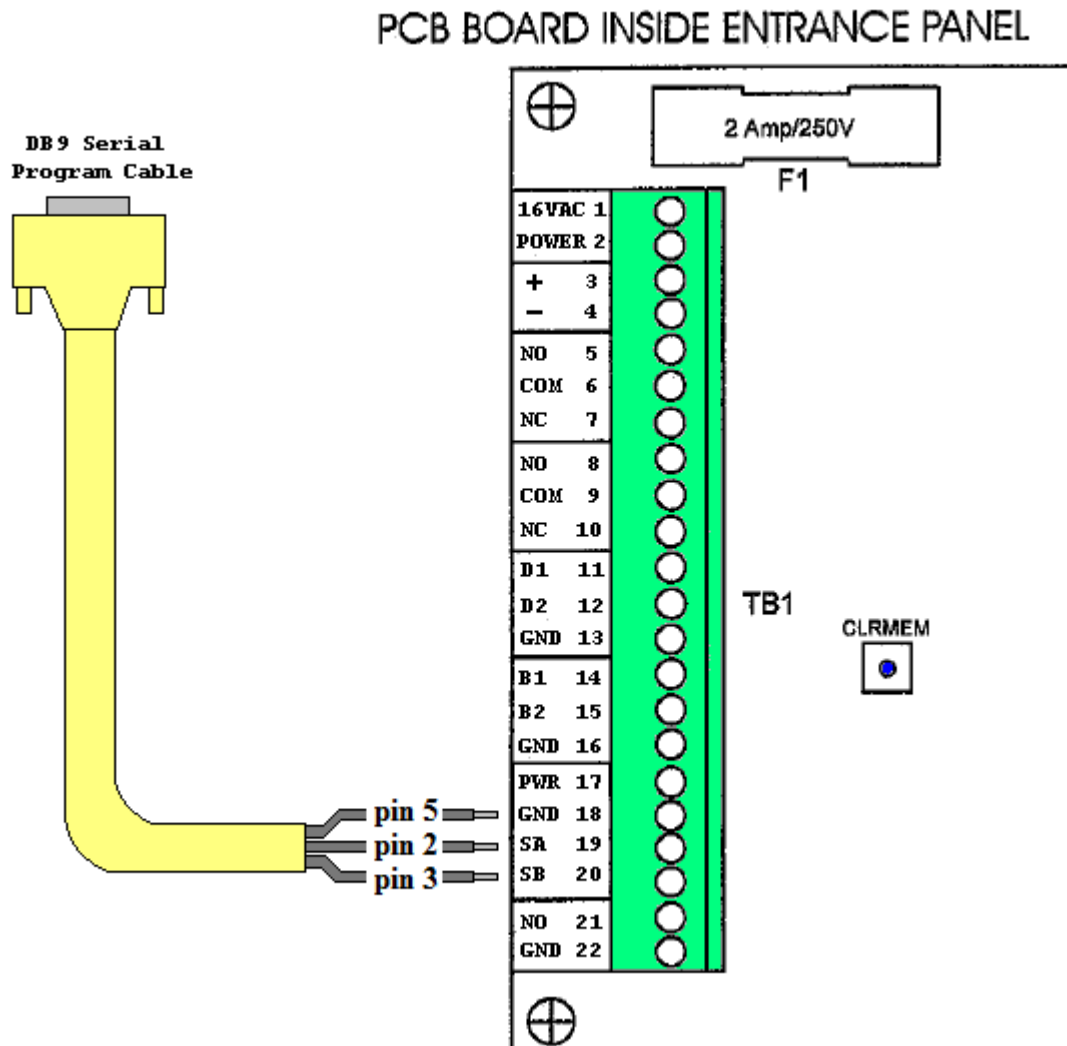
ENTERPhone Axess Panel – Quick Programming Guide

1. Serial Cable Connection – connect the serial programming cable to TB1 of the Axess panel PCD board.

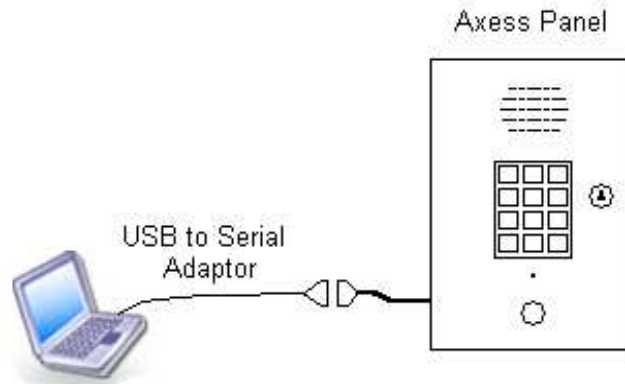
Wiring details:

DB9 Serial Program Cable	Terminal (TB1)
Pin 5	GND 18
Pin 2	SA 19
Pin 3	SB 20

Diagram:



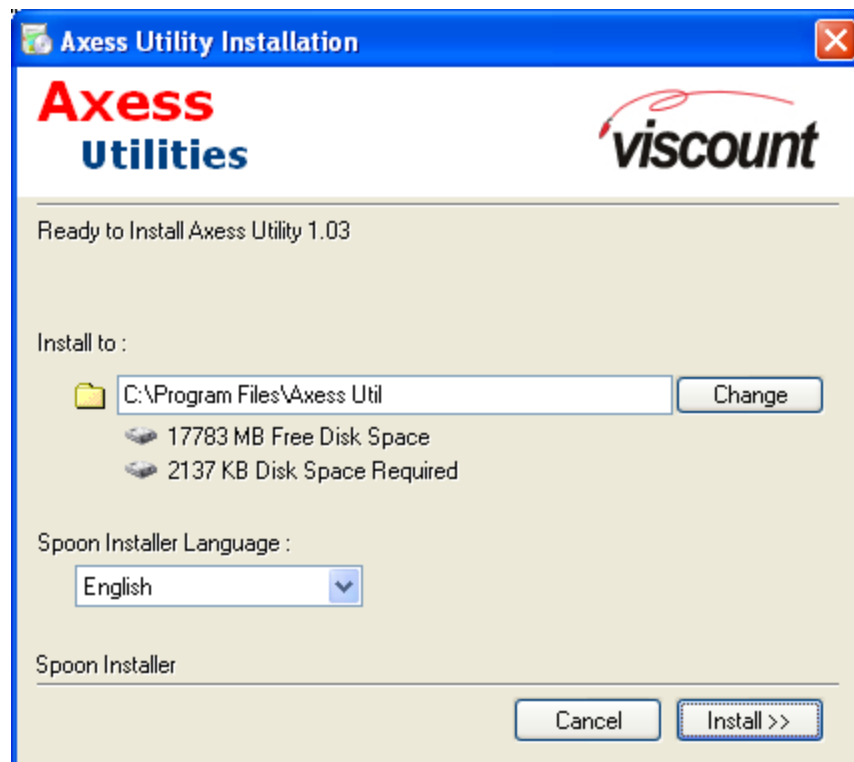
2. Connect to PC – Connect the DB 9 connector to your PC/Laptop's serial port. If your PC/Laptop do not have a built-in serial port, you may use a USB-to-Serial converter instead. See diagram below:



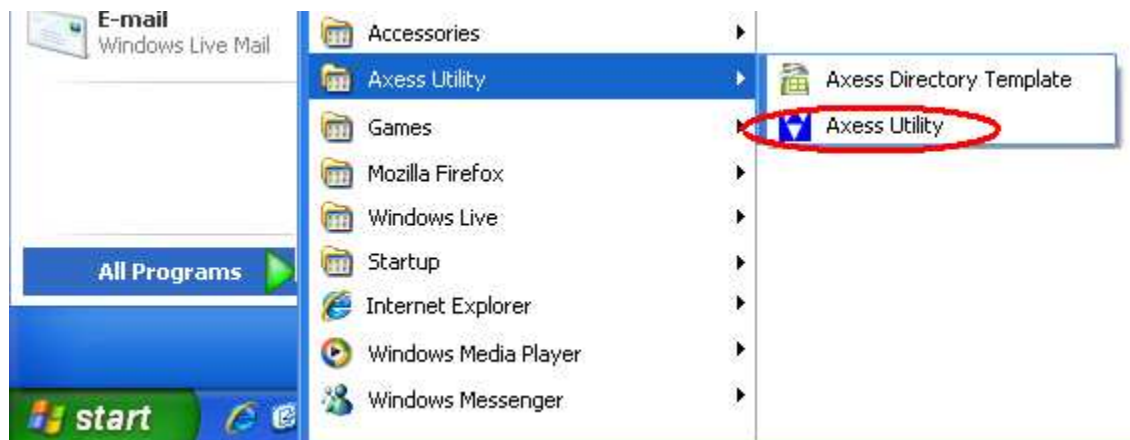
3. Install Access Software – if you have already installed Access Utility on your PC/Laptop, please skip to step 4.

Installing Access Utility:

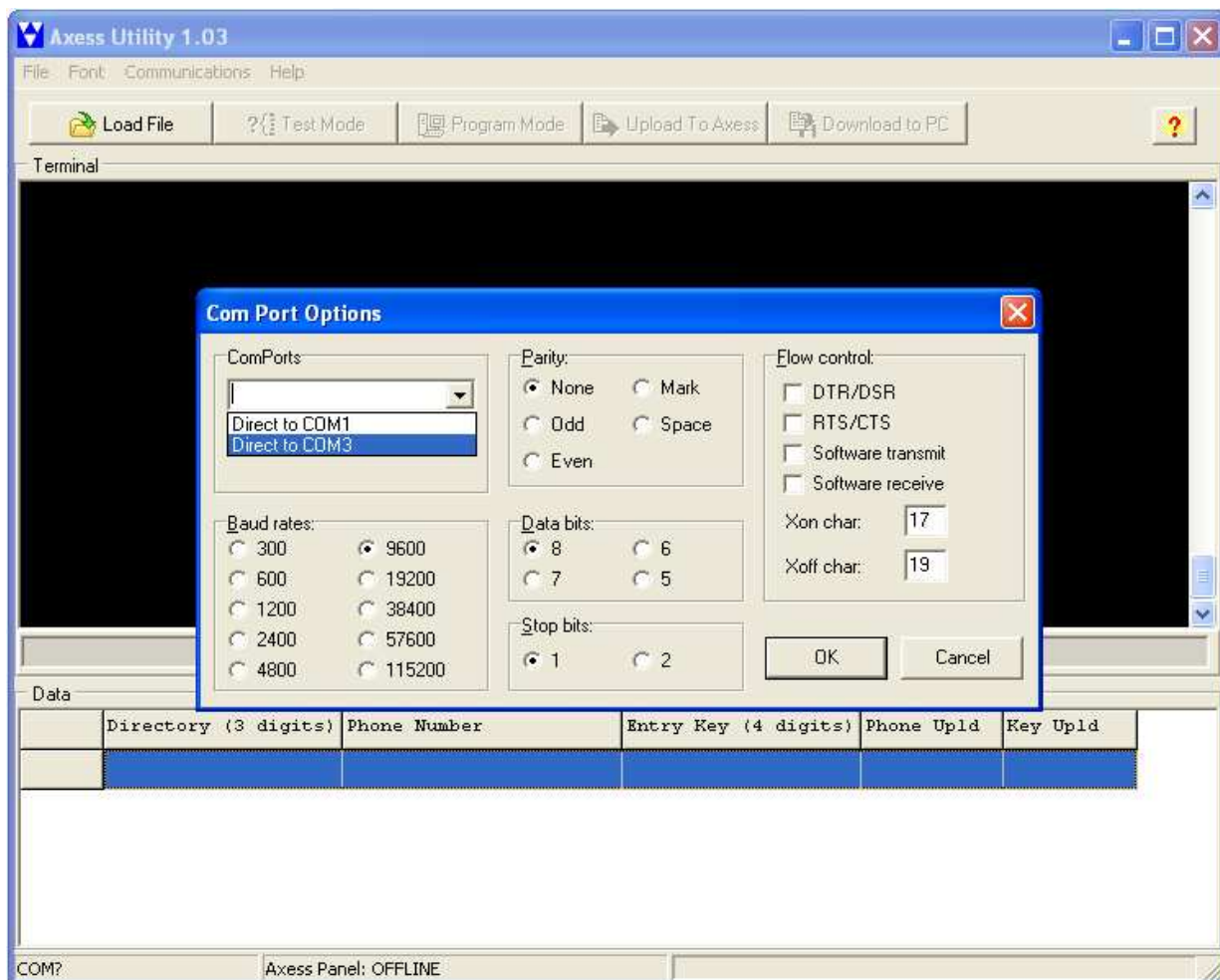
- a) put Access Utility CD in your CD/DVD-ROM
- b) click “install” and follow instructions to install Access Utility.



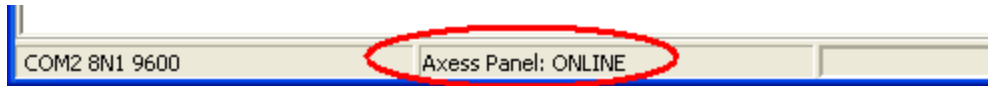
4. In Windows, click “Start”->”All Programs”->”Axess Utility”->”Axess Utility”:



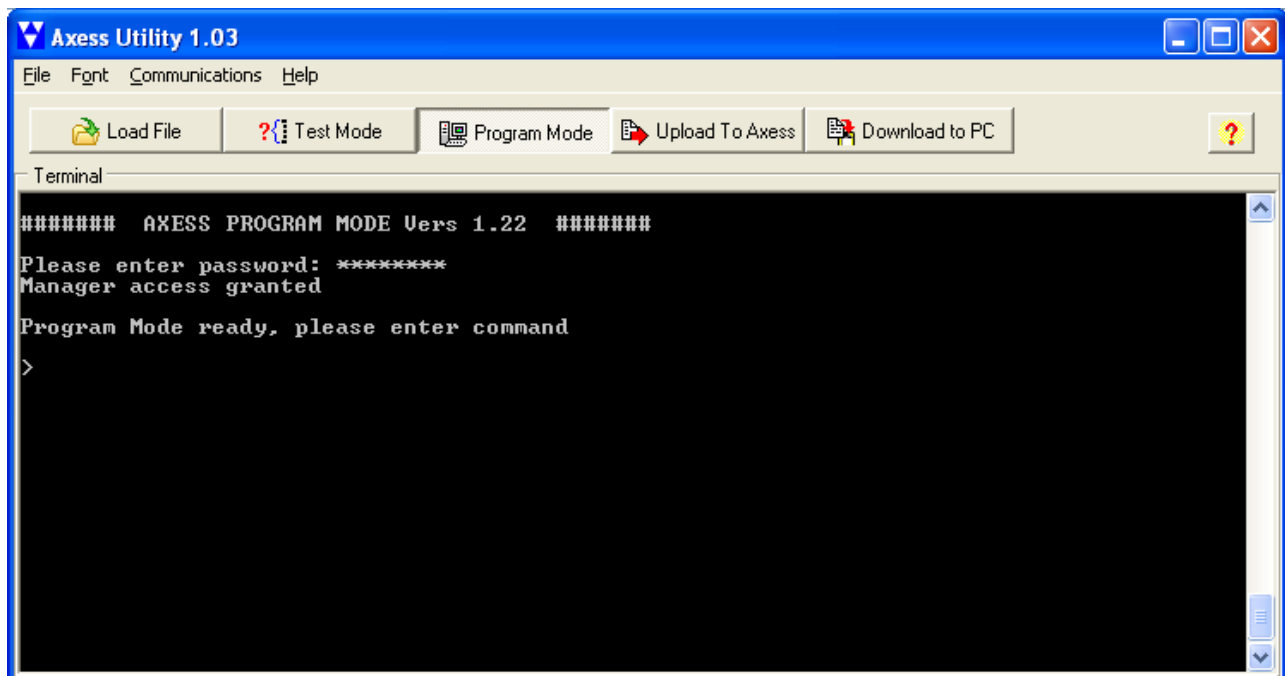
5. In Axess utility, select the Comport that is connected to the Axess Panel. Do not change any other parameters on the Com Port Option screen.



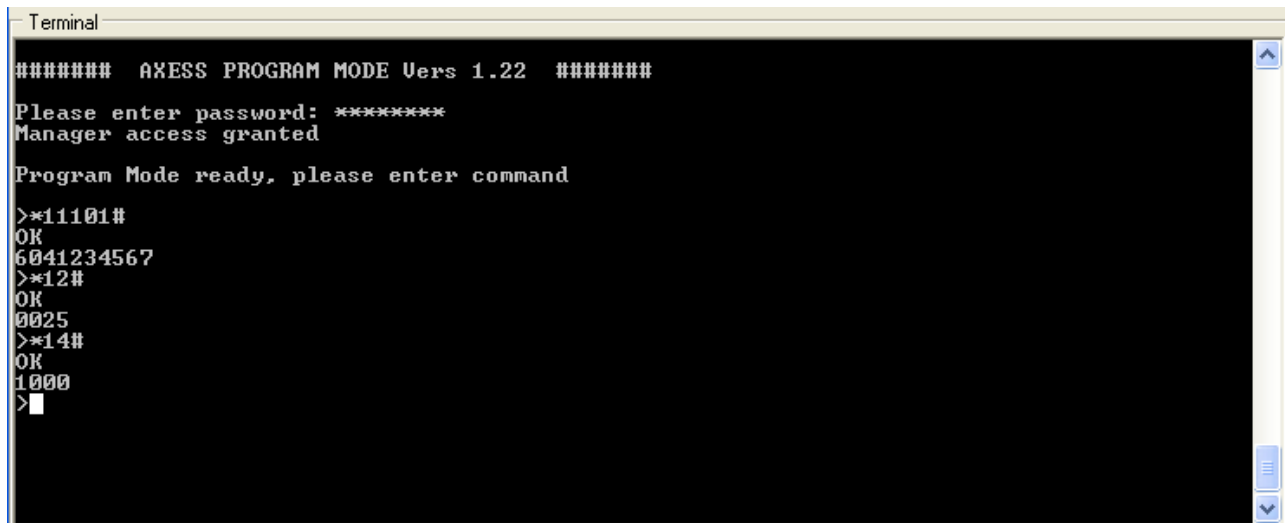
6. Observe the panel status at the bottom of the Axess Utility, when it is ONLINE you are ready to program the panel. If status stays OFFLINE for more than 30 seconds, check the power and connection to the Axess panel.



7. To enter Axess program mode, click the “Program Mode” button. In the terminal screen, enter password and hit <Enter> (Note that backspace key does not work in the terminal screen. If a typing mistake is made, hit <Enter> and retry). The user may either enter manager, installer or manufacturer level password. When Axess Panel replies with an “access granted” message, program mode is ready.



- In program mode, the user may enter commands through the terminal in the format of '*CC DDD NNNN#', just as if his/she is entering them via the panel keypad. When a command is accepted and executed, the panel will reply with an "OK" message. For view data commands such as *12# or *14#, the response will be shown in the next line after the "OK" message.



- To exit program mode, click the Program Mode button again. Alternatively the user may enter '##' to exit or simply wait till program mode times out after being idle for 1 minute. When the panel is leaving program mode, it will stay in "BUSY" state for 10-15 seconds and perform internal updates. Please leave the panel powered while it is in BUSY state.
- Before uploading directory information to the Axess Panel from an Excel spreadsheet, first make sure the spreadsheet is of the following format:

	A	B	C	D
1	Directory Number	Telephone Number	Entry Key Code	Comments
2	101	6041234567	1234	
3	102	6041234567		
4	103	6041234567		
5	104	6041234567		
6	105	6041234567		Put your comments or additional information here
7	106	6041234567		
8	107	6041234567		
9	108	6041234567	5678	
10	109	6041234567		
11	110	6041234567		
12	111	6041234567		
13				

The spreadsheet needs to have 3 columns - Directory Number, Telephone Number and Enter Key Code. The top row is reserved for column headers and will not be interpreted as directory data.

11. A sample spreadsheet template is available from the Axess Utility installation. To access it, click “Start” -> “All Programs” -> “Axess Utility” -> “Axess Directory Template”.



12. To upload directory information to the Axess Panel:

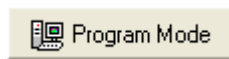
a) click "Load File" to load directory information from spreadsheet into program memory.



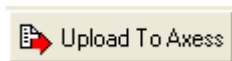
b) at the Directory size prompt. Select the desired sizes for directory codes and entry key codes. These size selections are necessary to make sure codes from the spreadsheet are padded with zeros when necessary (e.g. For 3 digit directory code, a 14 will be padded to as 014). Once information is loaded into memory, directory information can be previewed in the data grid area of the utility:

Data					
	Directory (3 digits)	Phone Number	Entry Key (4 digits)	Phone Upld	Key Upld
0001	101	6041234567	1234		
0002	102	6041234567			
0003	103	6041234567			
0004	104	6041234567			
0005	105	6041234567			

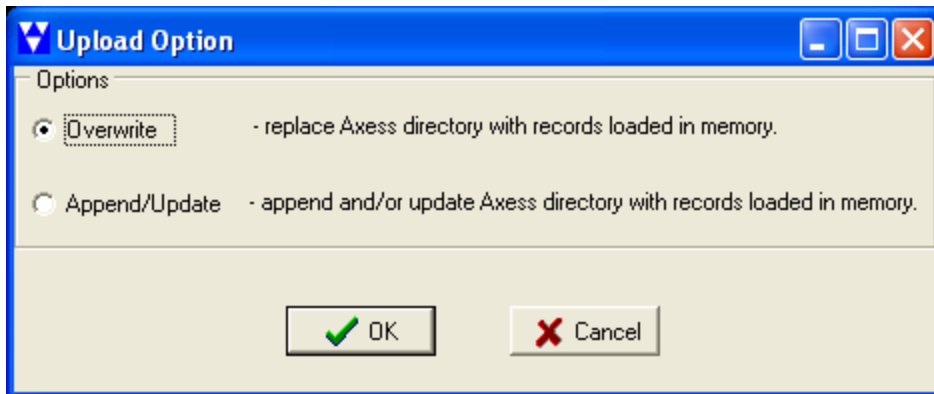
c) click "Program Mode" and enter password (see 7 & 8 for program mode details).



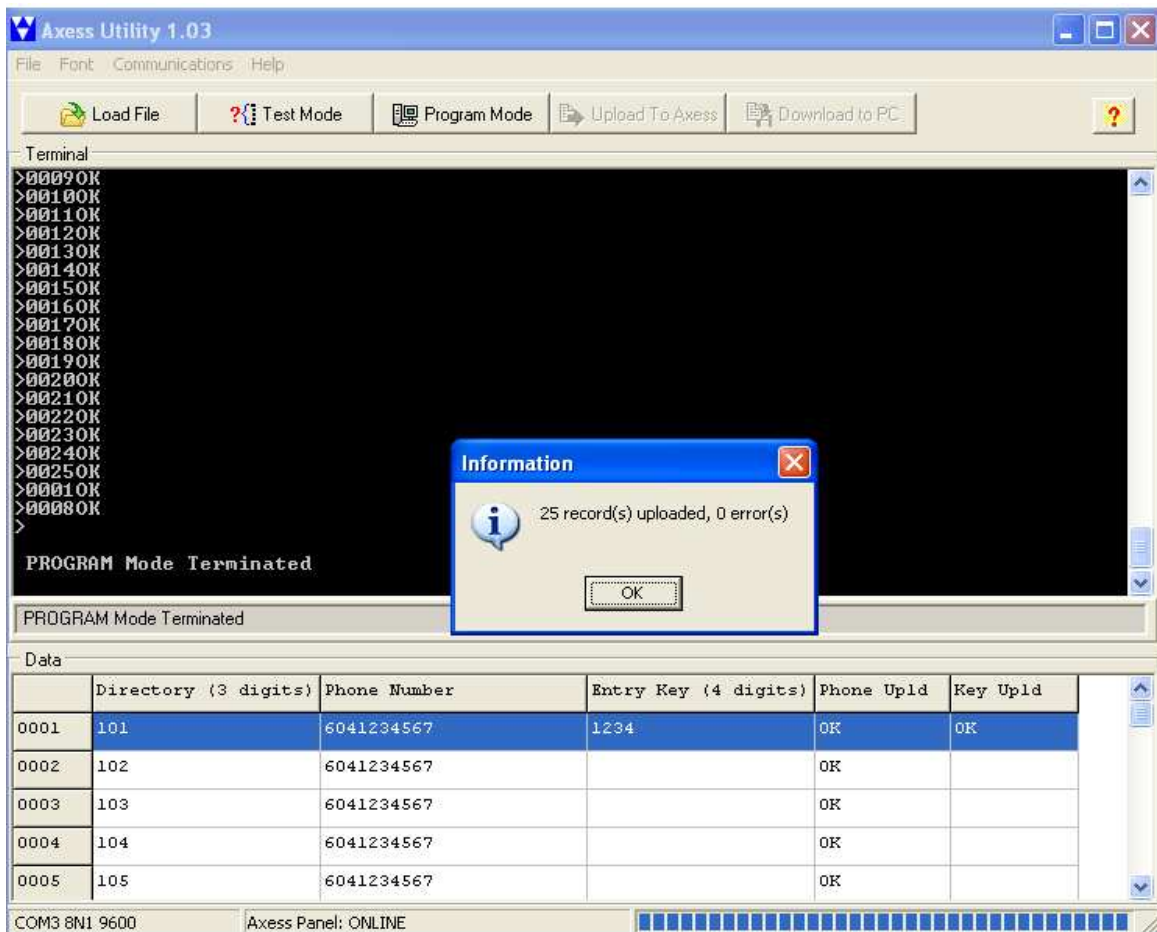
d) click “Upload to Axess”.



e) at the “Upload Option” dialog box, the user may either select “Overwrite” (default) or “Append/Update”. “Overwrite” option will erase all existing directory information and upload a fresh copy of data into the panel. “Append/Update” simply adds to or modifies existing data.



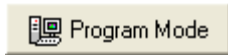
f) after choosing Upload Option, Axxess utility will upload information to the panel. The user may interrupt data transfer by clicking the pressed “Upload to Axxess” button. After upload is complete, a confirmation message will be shown:



g) after upload is complete, please make sure Axess panel is powered when it is returning to operation mode from program mode. At this stage the LED segment will display the word “BUSY” continuously for about 30 seconds.

13. To download directory information from Axess to PC:

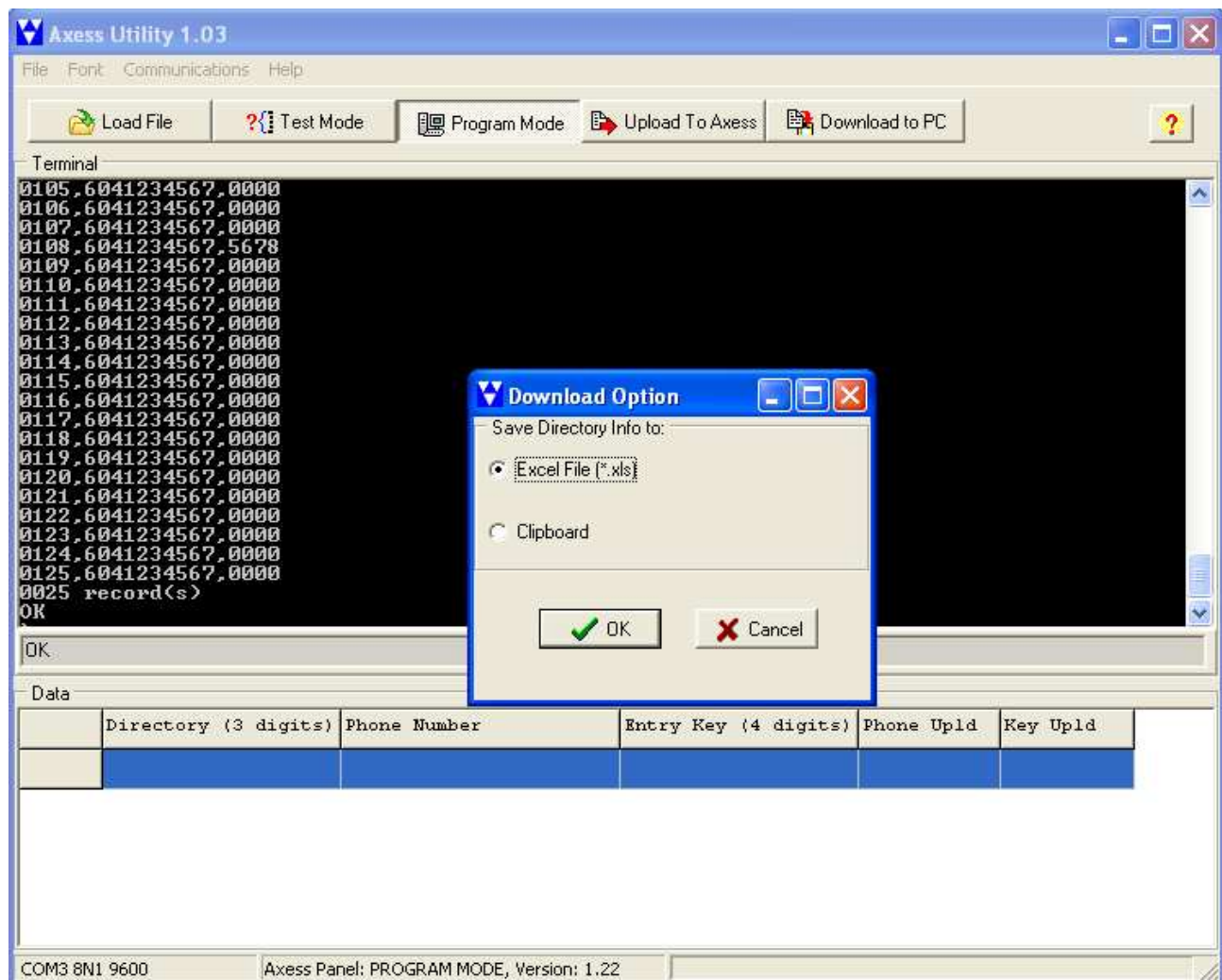
a) click "Program Mode" and enter password (see 7 & 8 for program mode details).



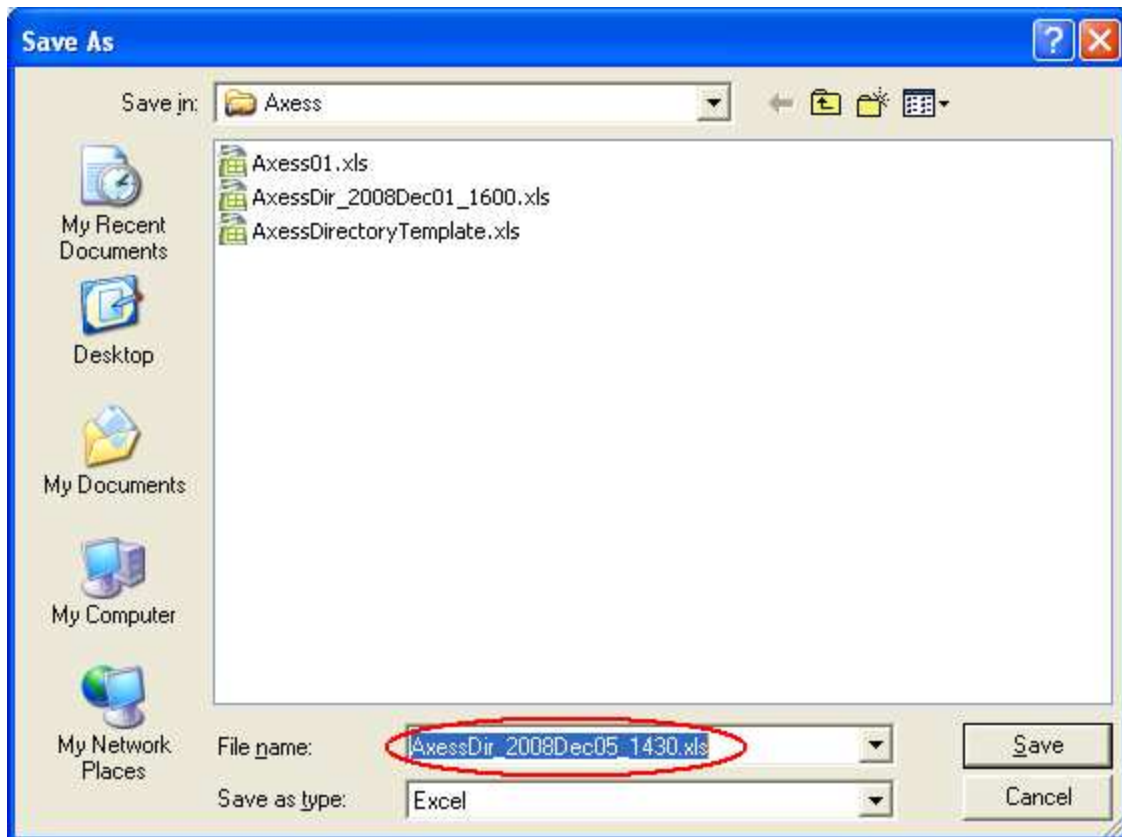
b) click “Download to PC”



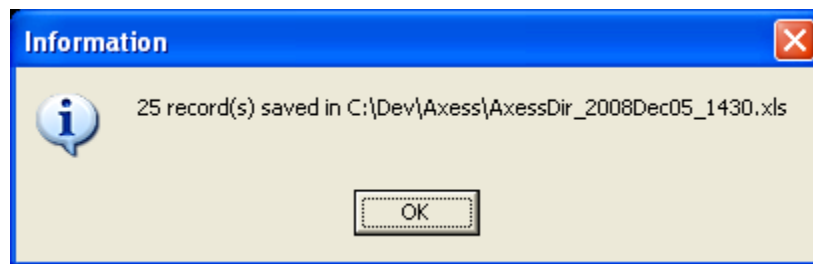
c) The Axess Panel will then display the complete list of directory information on the terminal screen. Once it is completed, AxessUtil will provide options to either save the information into a spreadsheet or simply copy to clipboard.



- d) Choosing the default “Excel File” Option will bring up a “Save As” dialog box. A default file name will be given and can be changed easily:



- e) Once the file is saved, a confirmation message will be shown:



- f) If the “Clipboard” option is chosen, AxessUtil will simply copy the captured information into Windows clipboard:

